



Heartworms: From Science to Solutions
New Orleans, Louisiana – September 8-11, 2019

Guidelines for Authors

Abstract Submission, Evaluation and Notification

Abstract Submission

- AHS encourages early title submission to help with Symposium planning.
- Abstracts can be updated online until **March 1, 2019**, Eastern Daylight Time.
- To submit your abstract, please go to:
<https://www.heartwormsociety.org/2019-abstract-submission>
- Abstracts must conform to the Format Guidelines below.
- See a sample abstract: [Example Abstract Submission](#).
- When you submit your abstract, you will be asked to provide an estimate of speaking time to if your abstract is selected for oral presentation.

Abstract Evaluation and Notification

- Abstracts are peer-reviewed for clinical and/or scientific content, relevance to heartworms, and clarity of writing.
- Research abstracts will also be reviewed for experimental design and animal welfare. Animals used in the described research are expected to have received humane care, ie, according to the principles outlined in the NIH Guide for the Care and Use of Laboratory Animals and/or the humane care guidelines found at the author's institution.
- Authors will be notified regarding abstract acceptance by **April 1, 2019**.
- If your abstract is accepted, you will be notified as to whether the presentation will be oral or in poster format.
- Abstracts are made available to all Symposium attendees in booklet or electronic form.
- Guidelines for formatting Abstracts and Posters are provided below.
- If your abstract is selected for oral presentation, submission of a full manuscript before the Symposium is required. Manuscripts will be published in a leading veterinary journal in citable format. Format guidelines for full manuscripts will be forthcoming.

Format Guidelines – Abstracts

File Format

- All abstracts must be saved in Microsoft Word format (.doc or .docx) to maintain the integrity of symbols incorporated in the documents.

Length

- Abstracts may not exceed 400 words (excluding title, authors, and affiliations). If tables or graphs are included in the abstract, they must be built in Microsoft Word. Limit to one graph or table per abstract.
- *Note:* Full manuscripts of the presentations will be published in a leading journal. Manuscripts are due no later than **December 31, 2019**. If you plan to publish elsewhere, you must notify AHS in advance. *Some journals will not publish manuscripts preceded by published abstracts of more than 250 words.* Authors should contact their target journals to assure that publication of the research abstract does not jeopardize future publication of the full manuscript

Layout

- *Note:* Abstracts that do not comply with the Format Guidelines will be rejected.
- Manuscripts must be in English.
- Use Times New Roman 10 point black font.
- All text must be single spaced. Do not insert extra lines between paragraphs. Insert one line space after the author/affiliation section.

Title and Authors

- CAPITALIZE THE ENTIRE ABSTRACT TITLE.
- List authors using initials followed by last names. Separate names with commas. Use superscript numbers to indicate affiliations (list affiliations separately below author/s).
- Underline the name of the presenting author.
- Create a new line for the author affiliations indicated by superscript numbers next to the author names. Include institution name, city, state, and country.
- Omit degrees, titles, departmental appointments, street address, and zip/postal code.

Content Guidance

- Organize the body of the abstract as follows: statements addressing purpose/objective, methods (for research abstracts), results, and conclusions. Provide sufficient results in the abstract to support the conclusions.
- Do not use subheadings (eg, Methods, Results).
- Tables and graphs: use with abstract only if simple, neat, and complementary to the abstract text. Large tables should be avoided.
- Please check your submission carefully for completeness, clarity, and accuracy. Content will be reviewed by the AHS Symposium Coordinators and by a professional veterinary copy editor for spelling, style, and conformity to Author Instructions.

Abbreviations, Acronyms, and Drug Names

- Abbreviations in text must be defined the first time they appear by placing them in parentheses after the word to which they apply, eg, melarsomine (MEL).
- Acronyms in text must be defined the first time they appear by placing them in parentheses after the phrase to which they apply, eg, coronary artery disease (CAD). Commonly understood acronyms, eg, ECG, do not require expansion in text.
- Show nonproprietary (generic) names the first time a drug is mentioned, written in lowercase letters. Capitalize proprietary names, eg, cimetidine (Tagamet).

Format Guidelines - Posters

Poster Competition

- Awards for Excellence will be given to selected poster presenters who are currently enrolled in training programs, including undergraduate, graduate, and professional studies and residencies.
- The Scientific Review Committee judges posters based on the quality of the research project study design, written abstract, poster design, and poster session presentation.

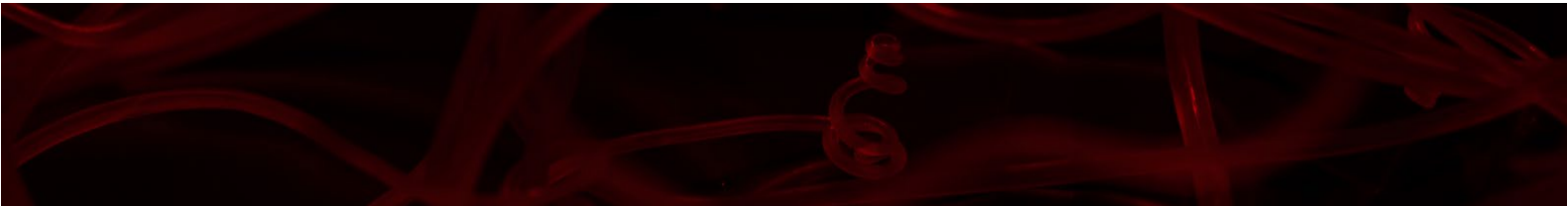
Poster Format and Preparation Tips

- Poster boards will be in place for mounting posters at the Symposium and measure 4 feet high by 8 feet wide.
- Posters should be mounted on the poster boards with push pins or thumb tacks.
- Sans serif fonts (such as Arial) are easier to read at a distance than serif fonts (such as Times Roman).
- Text boxes approximately 40 characters wide are easier to read than shorter or longer lines.
- Dark text on light background is easier to read than light text on dark background.
- The title font should appear in sentence case using 90-point to 120-point type.
- Headings should be 34-point to 48-point, and text should be 28-point to 36-point.
- The poster should include the following sections: Abstract, Introduction, Hypothesis (or Objectives), Methods, Results, Conclusions, References, and Funding/Acknowledgments or other sections as appropriate.
- All sources of research funding and potential conflicts of interest must be disclosed in the lower right corner of the poster.
- Illustrations should be large and heavy enough so that they can clearly be read from a distance of 3 feet.

Excellent tips for poster preparation and presentation are available at <http://colinpurrington.com/tips/academic/posterdesign>.

Poster Presentation Schedule

- Watch for updates on the time for poster presentation, setup, and teardown.
- Awards for posters presented by student and resident authors will be announced during the final sessions of the Symposium.
- Poster teardown deadline will be announced with subsequent updates.



2019 Symposium Abstract Submission

Please download and review the [Guidelines for Authors](#) before you submit this form.

Abstract Submission

Name *

Address1 *

Address 2

City *

State *

Postal code *

Country *

Phone *

Email *

Confirm Email *

Key Fact #1 *

Key Fact #2 *

Key Fact #3 *

Key Fact #4 *

Key Fact #5

Key Fact #6

Key Fact #7

Estimated minutes of speaking time if selected for oral presentation *

File Upload *

no file selected

Join AHS.

Join the leading association on Heartworm education and prevention today!

Already a Member? [Sign in here.](#)

[Membership Details](#)

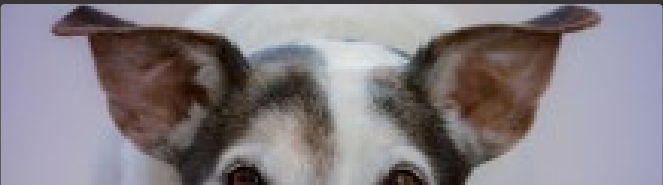
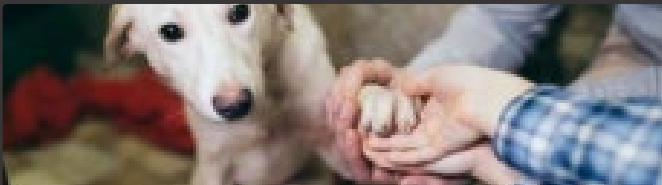
Get the Latest.

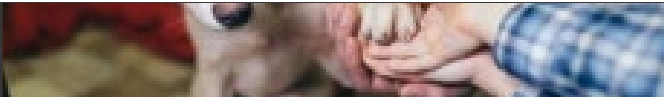
Subscribe to RED HOT News and COOL TOOLS Updates from the American Heartworm Society.

AHS does not share your private information.

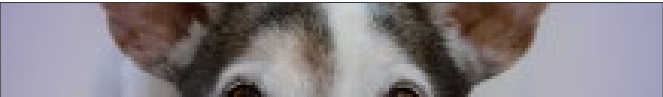
Subscribe

NEWS FROM AMERICAN HEARTWORM SOCIETY





Special Needs Pets: Can I Adopt a Heartworm-Positive Dog?



American Heartworm Society Releases 2018 Canine Heartworm Guidelines



TWITTER: @AHS_THINK12

ICYMI: 2018 Heartworm treatment guidelines! <https://t.co/YRS6MvCMYe> #veterinary #PetHealth #DogsofTwittter <https://t.co/YMUJmstbUS>
by Heartworm Society 17834900 days ago

We love our @LMU_CVM AHS Student Liaisons! Here they are with members of their faculty, staff, and other veterinary... <https://t.co/6nmlQl2nQD>
by Heartworm Society 17834901 days ago

RT @LafeberVet: MT @AHS_Think12: What raises the risk of heartworm disease? via @BMAH121 <https://t.co/JldlnaBeT6> <https://t.co/IEFMCuWLee> h...
by Heartworm Society 17834901 days ago

The risk is real #veterinary #dogsoftwitter <https://t.co/IJlaaSZVvR> <https://t.co/wdbl1E51Nn>
by Heartworm Society 17834902 days ago

[SUPPORT AHS](#) [LINKS](#) [MEMBER LOGIN](#) [SPONSORS](#) [CONTACT US](#) [PRIVACY POLICY](#) [SUBSCRIBE](#)

Copyright © 2018 American Heartworm Society. All Rights Reserved. | Post Office Box 8266, Wilmington, DE 19803-8266 USA