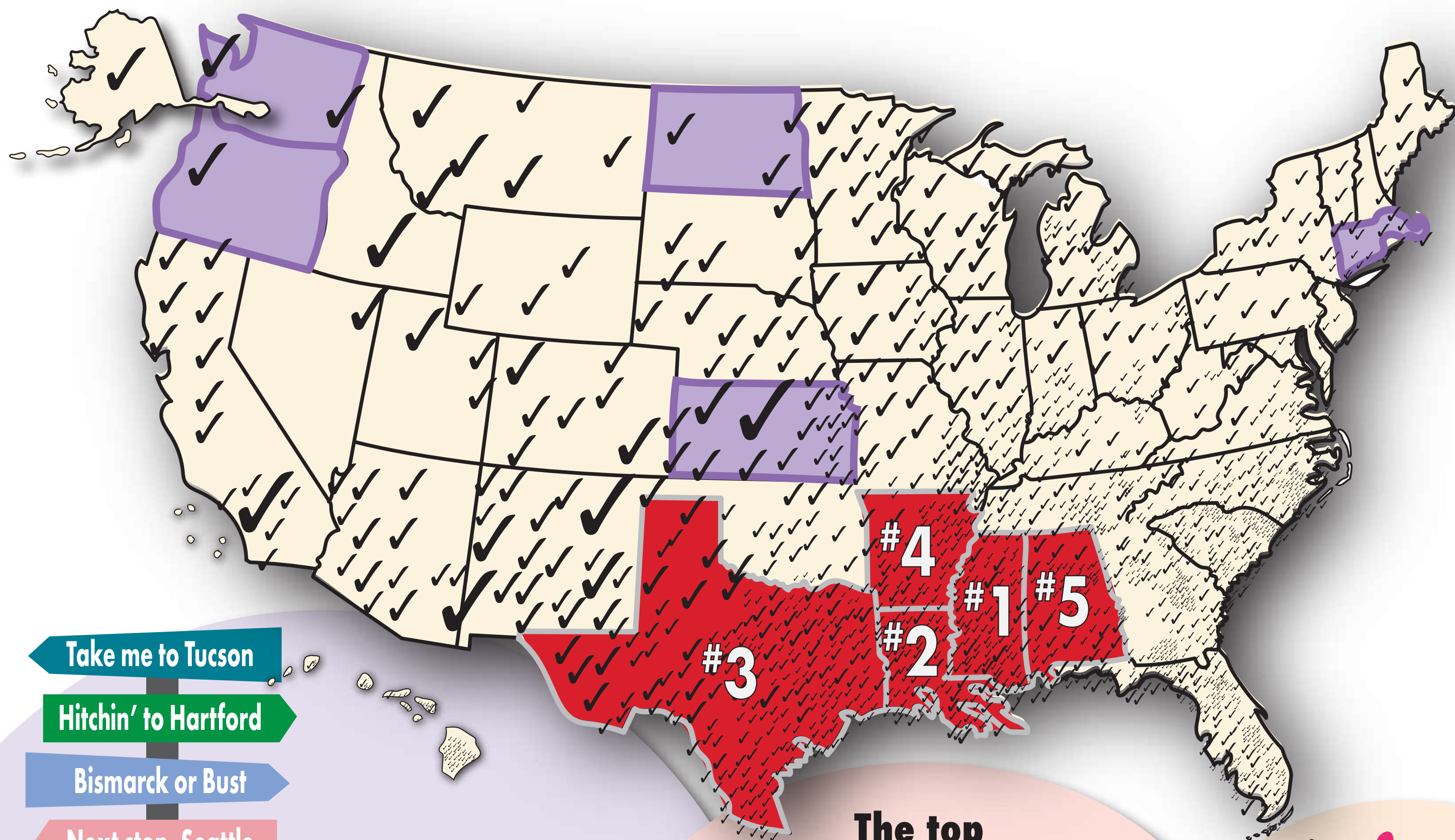
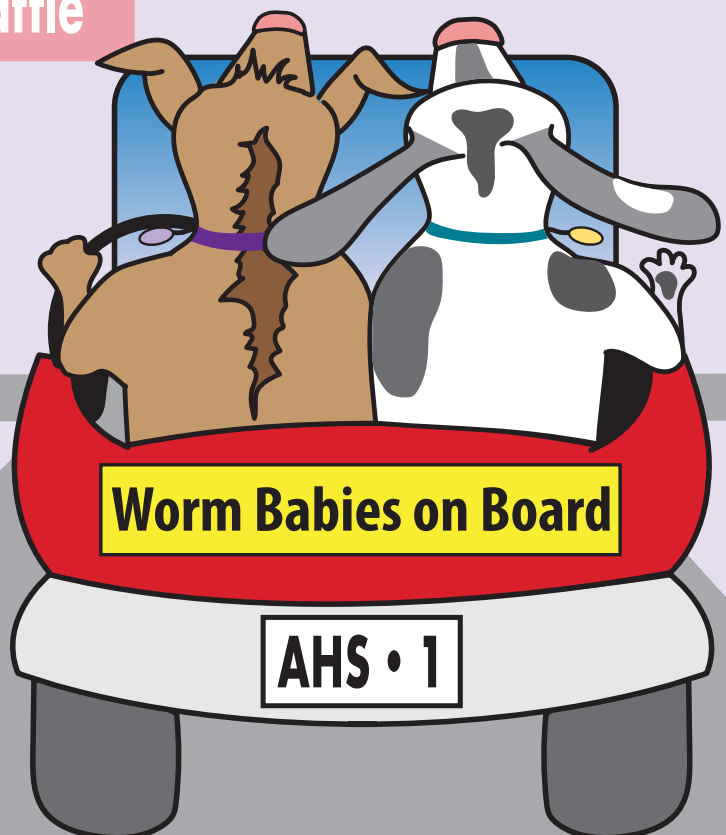


WHERE ARE THE HEARTWORMS—AND WHY?

✓ **Heartworms are found in all 50 states**, according to a recent American Heartworm Society (AHS) survey of U.S. veterinarians.



- Take me to Tucson
- Hitchin' to Hartford
- Bismarck or Bust
- Next stop, Seattle



The top 5 states for heartworm incidence are **Mississippi, Louisiana, Texas, Alabama, and Arkansas**. And the regions where heartworm rates are highest are growing.

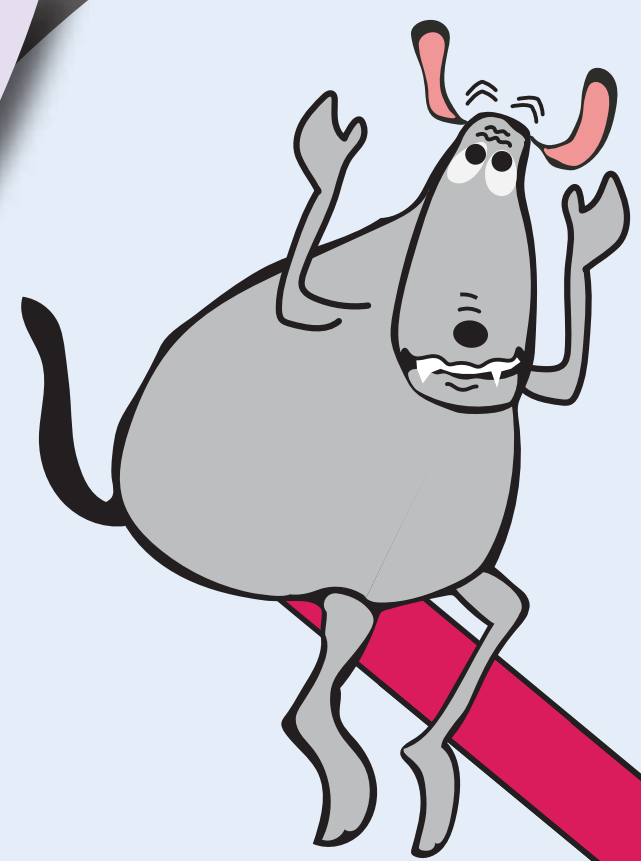
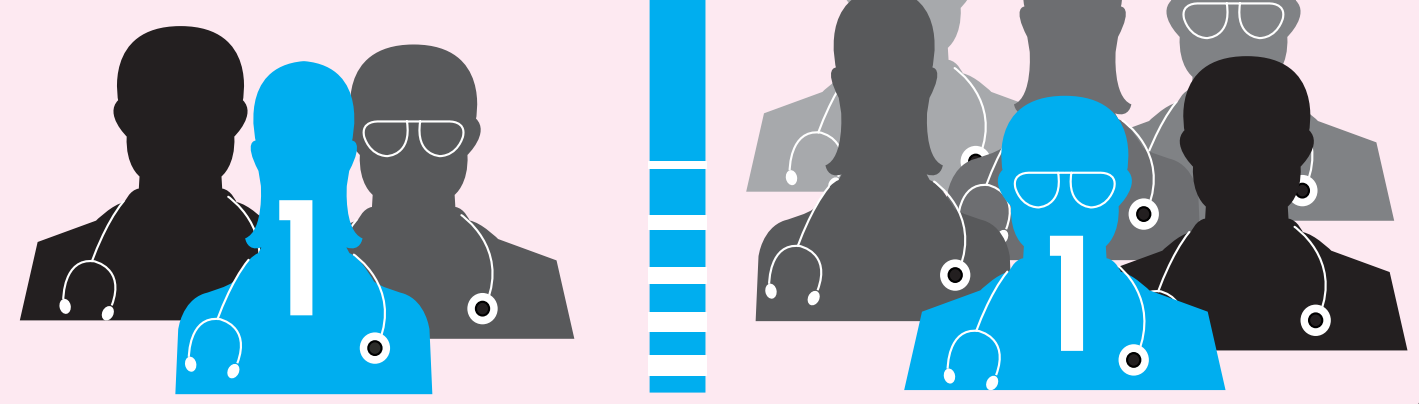
It's a taste test. Given a choice, mosquitoes **prefer feeding on dogs with heartworm** vs. non-infected dogs.*

Heartworms are finding new homes.

In the latest AHS survey, states like **Washington, Oregon, Kansas, North Dakota, Massachusetts and Connecticut** — that historically have low heartworm rates — saw increased numbers.

Heartworm rates continue to rise.

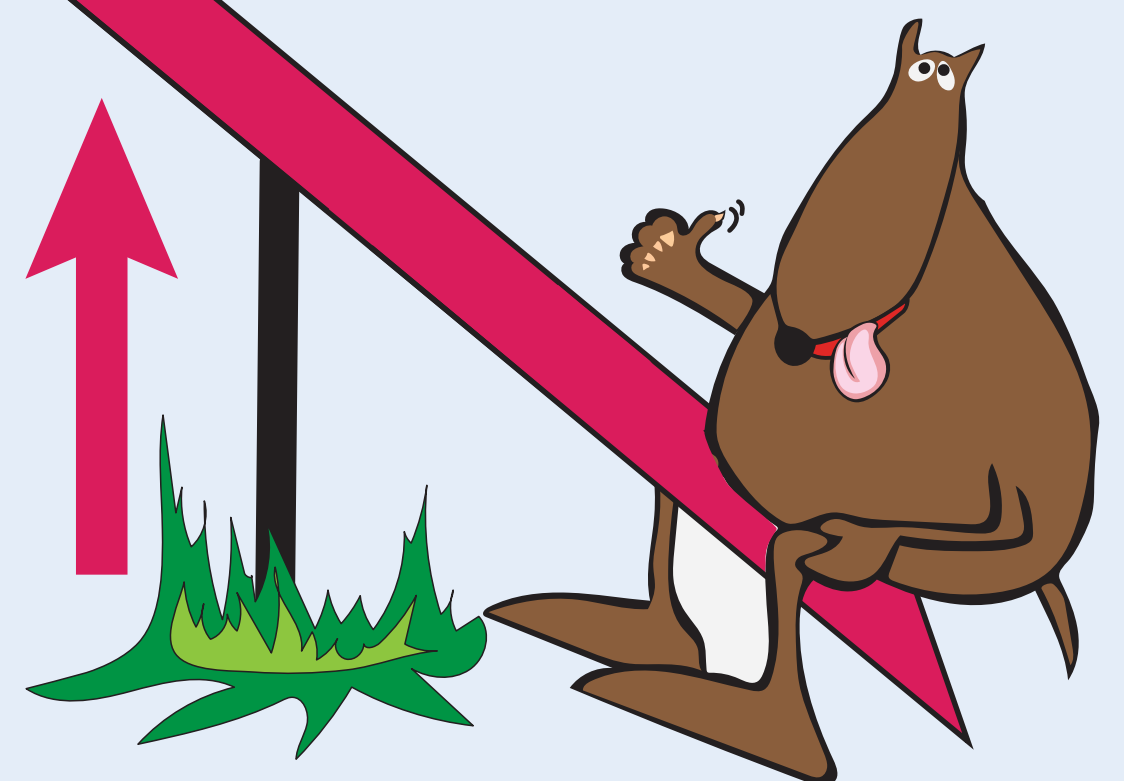
Almost **1 in 3** veterinarians surveyed say heartworm rates have increased in the past 3 years... while just **1 in 6** say they are falling.



Heartworm prevention WORKS.

Veterinarians who saw heartworm rates fall were most likely to say the reason was **more owners are giving preventives.**

Leading reasons for heartworm increases are **movement of infected dogs & failure to give preventives.**



* McKayT, BiancoT, RhodesL et al. Prevalence of *Dirofilaria immitis* (Nematoda: Filarioidea) in Mosquitoes from Northeast Arkansas, the United States. JMedEntomol. 50(4): 871-878 (2013).