



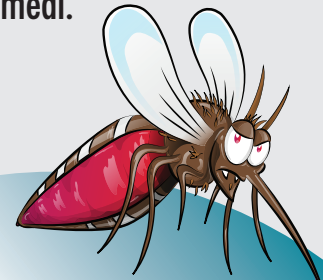
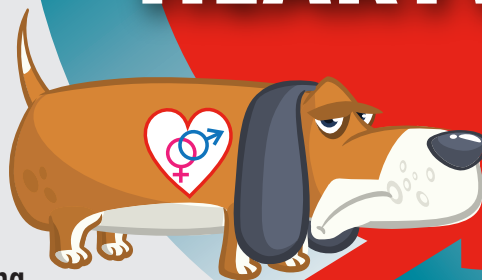
**1** It starts with a dog— or coyote or wolf— with heartworms. Heartworms mate inside infected dogs and produce **millions** of microscopic babies that live in the bloodstream.

**2** When a mosquito bites an infected dog, heartworm babies are sucked up along with her blood meal.

**3** For the next **10-14** days, the mosquito provides a nursery for the heartworm babies in her body. The babies develop into larvae and travel to the mouthpiece of the mosquito. The next stop? **Your pet.**

**5** By **6** months after infection, heartworms are mature and **12** or more inches long. They begin mating, starting the cycle all over again. And they continue to live and produce offspring for up to **7** years.

# HOW DO DOGS GET HEARTWORMS?



**4** When the infected mosquito bites a pet, the heartworm larvae enter through the bite site, making their way to the bloodstream.

Within **7-10** weeks, they reach the pulmonary arteries, heart and lungs, where they can cause serious disease.