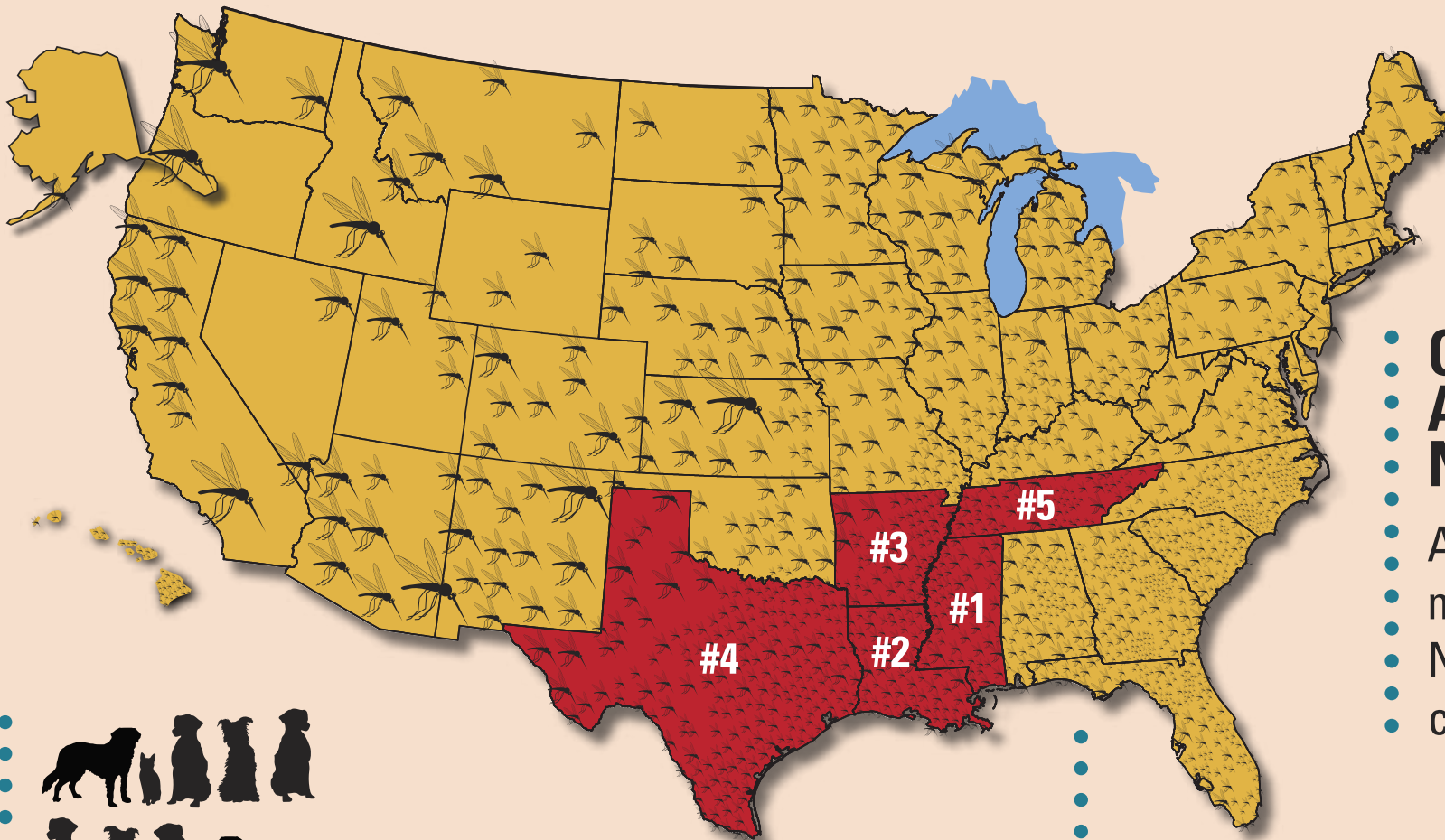
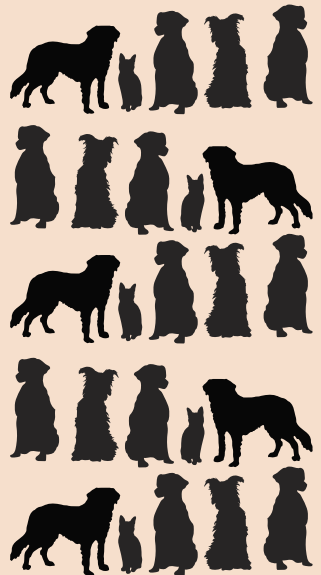


HEARTWORM BY THE NUMBERS

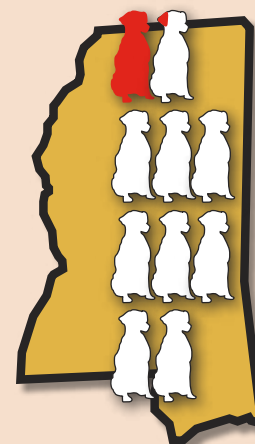
Heartworm has been diagnosed in **all 50 states**.



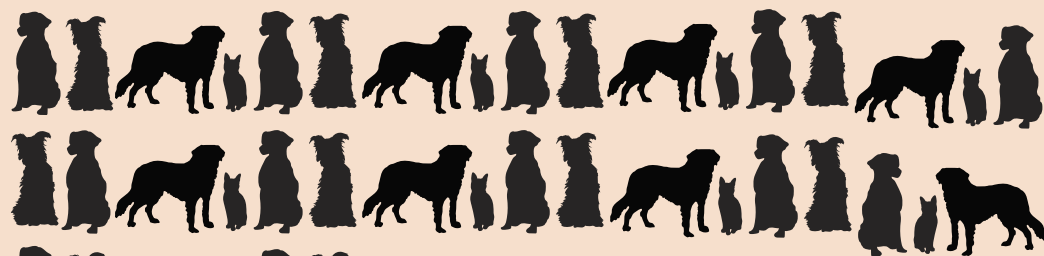
- **COMING TO A SPECIES NEAR YOU.**
- At least **22** different mosquito species in North America can carry heartworms.



- **WHERE THE WORMS ARE WORST.**
- The **TOP 5** states are: Mississippi, Louisiana, Arkansas, Texas, Tennessee.

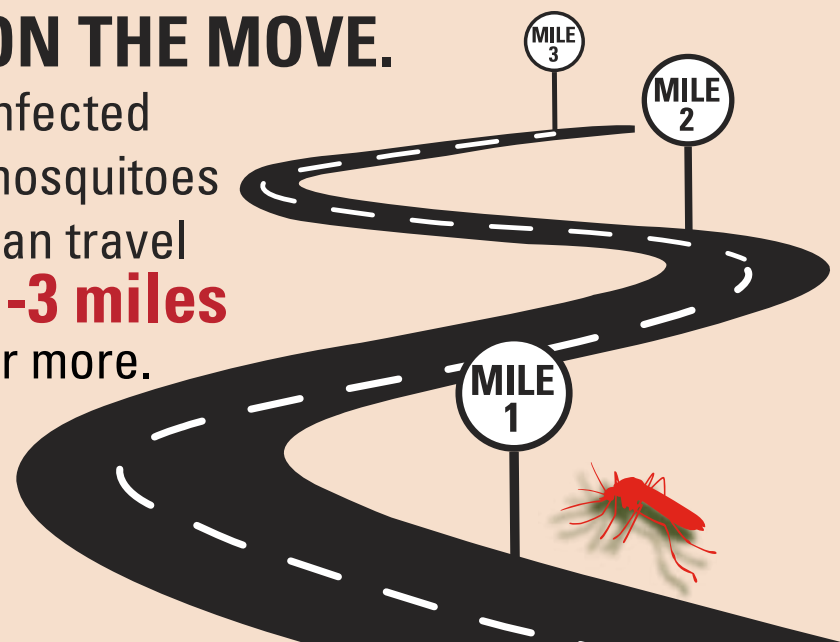


HEARTWORM CENTRAL.
More than **1 in 10** dogs tested in Mississippi are heartworm-positive.*



PET PROBLEM.
More than **1,000,000 PETS** in the US are believed to be heartworm-positive.

- **ON THE MOVE.**
- Infected mosquitoes can travel **1-3 miles** or more.



* 2016 American Heartworm Society Incidence Survey.