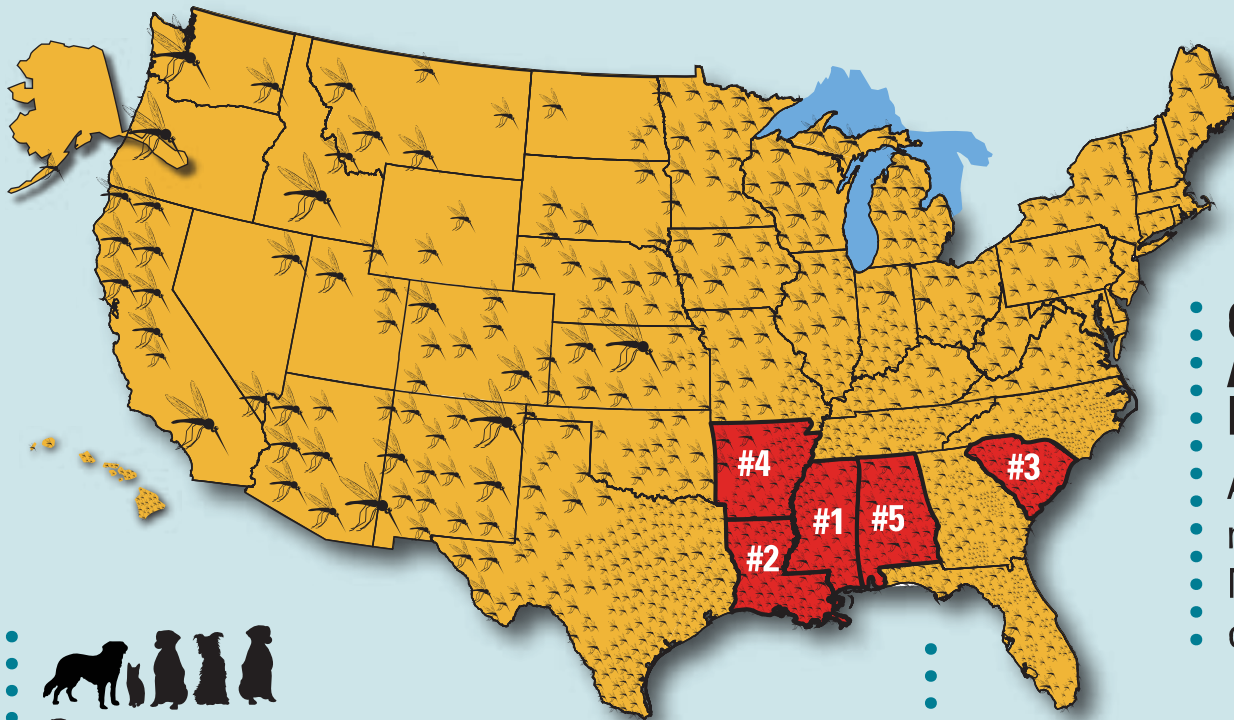


# HEARTWORM BY THE NUMBERS

Heartworm has been diagnosed in **all 50 states**.



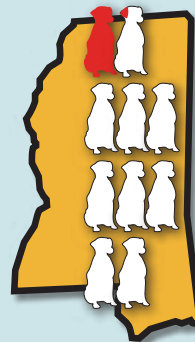
• **COMING TO A SPECIES NEAR YOU.**

- At least **22** different mosquito species in North America can carry heartworms.



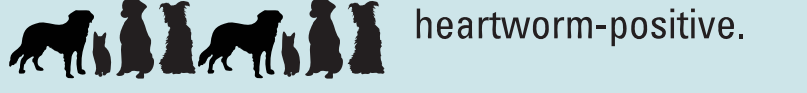
• **WHERE THE WORMS ARE WORST.**

• The **TOP 5** states are:  
 • **Mississippi, Louisiana, South Carolina, Arkansas, and Alabama.**



• **HEARTWORM CENTRAL.**

• Approximately **1 in 10** dogs tested in Mississippi are heartworm-positive.\*

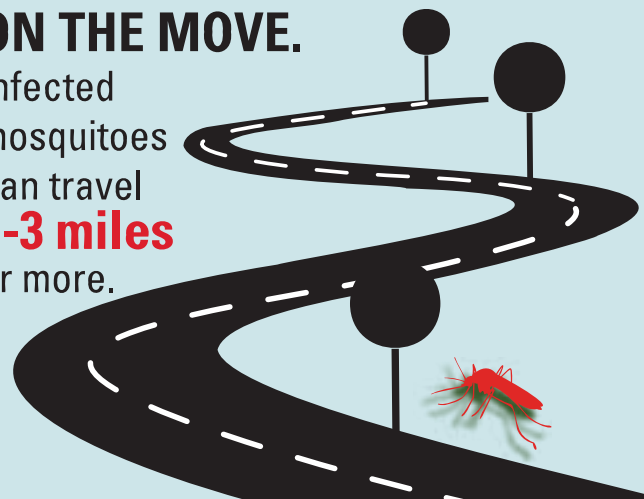


• **PET PROBLEM.**

• More than **1,000,000 PETS** in the US are believed to be heartworm-positive.

• **ON THE MOVE.**

• Infected mosquitoes can travel **1-3 miles** or more.



\* 2019 American Heartworm Society Incidence Survey.